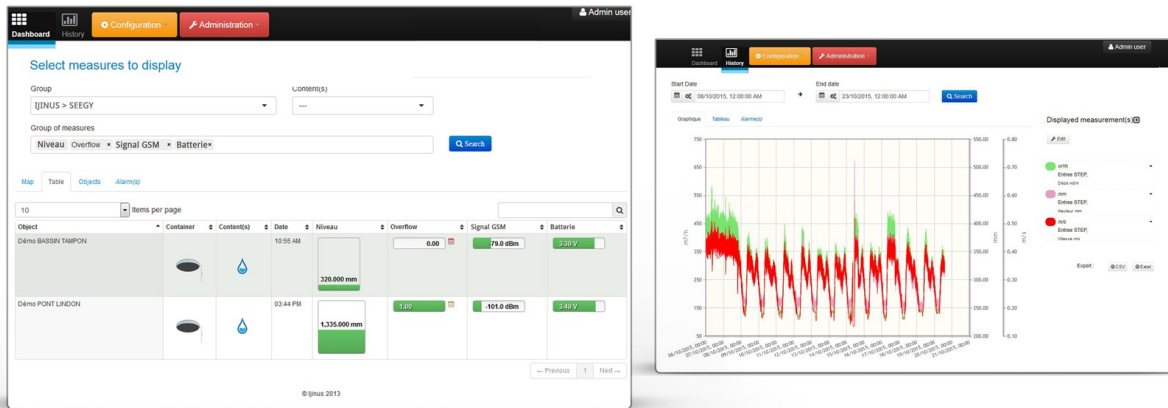




Ijitrack.com : Web-based data monitoring platform



- Simple and intuitive interface
- Protected data access
- Quick sensor configuration
- Data displayed on map, in table and objet
- Automatic alarms via SMS, Email
- Customers account management
- Export data to Csv, Xls formats
- Multi-axis and multi-curves graphs

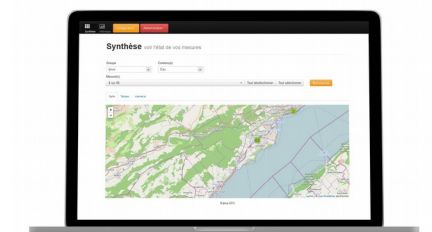
Fonctionnalités :

Web Interface to supervise all your data, manage your clients accounts, export data in detailed reports

Ijitrack allows you to generate alarms on level, overflow, flow rate, unusual parameters. For each alarm you can set a high and low threshold. Alarms are visible on **ijitrack.com** and can be transmitted by mail, SMS

- Centralization and timestamp of data, displayed in summary and history pages
- Simplified creation and management of customer accounts, visible by groups in tree view
- Import data by SMS, GPRS (FTP), 3G, Sigfox
- User rôle management : administrator, éditeur, viewer, group
- Automatic alarms sending via Email, SMS (up to 20 recipients)
- Data export in Xls and Csv files
- Export automatizable by HTTP requests
- Graphical display of data :

Multi-axis graph - up to 7 curves - alarm thresholds
(Each user can set his own alarm thresholds)

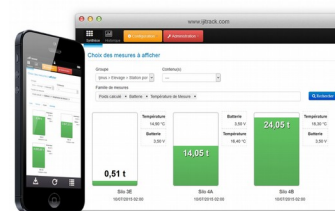


Specifications :

- Web interface in Java, HTML, Java script
- Compatibility with : Chrome, Firefox, Explorer, Safari.

PC, tablettes and mobiles

- Compatibles devices : data sent by Ijinus sensors, data loggers et other peripherals
- Secured Https connexion : 128 bits encryption



Ijitrack server :

We can also provide our web application ijitrack.com/ in server-based versions :

Version to install on your server or data center

Prepared and optimized server ready for telemetry

The commissioning is done remotely by our IT team. Ijitrack is sold in the form of licenses:

Minimum server requirements :

Hardware

Your configuration will depend for the hardware part of the client server (hosted in your business or in data center) on the number of sensors :

- 1 to 30 capteurs : 2GB RAM / 1 processeur cores / 250GB hard drive
- up to 100 sensors : 8GB RAM / 2 cores / 500 GB
- up to 1 000 sensors : 16GB RAM / 4 cores / 1TB
- beyond 1 000 sensors : 32GB RAM / 8 cores (solution bi-xeon if possible) / 2 TB or more

The more you solicit the history data, more your need to a large server arise.

Software

- an operating system choice such as Linux or Ubuntu (latest stable version recommended)

If you use Windows server, add 1GB RAM

- a Java virtual machine version up to date (JDK 7 or Sun JRE7)